



Product Catalogue



Seafood people dedicated to the **future of better.**



The sea is **our frontier.**
It is also **our future.**

FISH is a future-driven seafood company dedicated to the pursuit of Better. We create exceptional quality seafood products that's tastier, fresher and better for the world.

A global Singapore company, FISH is at the forefront of seafood processing technology and R&D to cater to the tastes of the modern consumer. We serve over 90 countries and more, boldly venturing into under-served markets. We staunchly believe that everyone deserves access to ethically sourced, delicious seafood.

Sustainability is embedded in our DNA. With more than 5 decades in the industry and processing 24,000 metric tonnes of seafood each year - we have forged long-term partnerships with fishing grounds and suppliers who share our pledge to protect the resources of future generations.

At FISH, we don't just aspire for a good future,
We better it.

Welcome to the Future of Better.

Our **Products** ●

Every single day we seize the challenge of improving the way we source, process and produce seafood products. We look at the gaps, identify opportunities and collaborate with partners to create fresh ideas. We create better tasting, exceptional quality fish and seafood for today and the future.

We list our products into 3 categories,
Tuna, Fish and **Others**.

Our main products are

TUNA

Yellowfin Tuna

FISH

Escolar (Oilfish)

Patagonian Toothfish (Chilean Seabass)

Marlin

Mahi Mahi

Moonfish (Opah)

Kingfish (Spanish Mackerel)

Swordfish

Skipjack

Salmon

Grouper

Red Snapper

Barramundi

Atlantic Cod

Yellow Croaker

OTHERS

Vannamei Shrimp

Lobster



Seafrozen Yellowfin Tuna GG

SPECIFICATIONS

gills removed, guts removed

WEIGHT/SIZE

15-25, 25-40, 40kg up

PACKAGING

IQF, Bulk, Nude



Seafrozen Yellowfin Tuna HG

SPECIFICATIONS

headless, guts removed

WEIGHT/SIZE

15-25, 25-40, 40kg up

PACKAGING

IQF, Bulk, Nude



Seafrozen Yellowfin Tuna Loin

SPECIFICATIONS

skinless, boneless, dark meat removed, processed from seafrozen raw material

WEIGHT/SIZE

1-2, 2-5kg

PACKAGING

IQF, IWP, 25kg/ctn



Premium Yellowfin Tuna Loin

SPECIFICATIONS

skinless, boneless, dark meat removed

WEIGHT/SIZE

1-2, 2-5kg

PACKAGING

IQF, IVP, 25kg/ctn



Premium Yellowfin Tuna Saku

SPECIFICATIONS

gills removed, guts removed

WEIGHT/SIZE

150-300, 300-500, 500g up

PACKAGING

IQF, IVP, 10kg/ctn



Premium Yellowfin Tuna Steak

SPECIFICATIONS

headless, guts removed

WEIGHT/SIZE

100-140, 140-200, 200g up

PACKAGING

IQF, IVP, 10kg/ctn



Premium Yellowfin Tuna Poke Cube

SPECIFICATIONS

skinless, boneless, dark meat removed

WEIGHT/SIZE

1.5 x 1.5 x 1.5cm

PACKAGING

IQF, 500g/bag, 10kg/ctn



Premium Yellowfin Tuna Cube

SPECIFICATIONS

skinless, boneless, dark meat removed

WEIGHT/SIZE

10-40g

PACKAGING

IQF, 500g/VP bag, 10kg/ctn



Premium Yellowfin Tuna Portion

SPECIFICATIONS

skinless, boneless, dark meat removed

WEIGHT/SIZE

40g up

PACKAGING

IQF, 500g/VP bag, 10kg/ctn



Premium Yellowfin Tuna Strip

SPECIFICATIONS

skinless, boneless, dark meat removed

WEIGHT/SIZE

—

PACKAGING

IQF, 500g/VP bag, 10kg/ctn



Premium Yellowfin Tuna Bits & Pieces

SPECIFICATIONS

skinless, boneless, dark meat removed

WEIGHT/SIZE

—

PACKAGING

IQF, 500g/VP bag, 10kg/ctn



Premium Yellowfin Tuna burger

SPECIFICATIONS

skinless, boneless, dark meat removed

WEIGHT/SIZE

100g up

PACKAGING

IQF, IVP, 10kg/ctn



Premium Yellowfin Tuna Carpaccio

SPECIFICATIONS

skinless, boneless, dark meat removed

WEIGHT/SIZE

—

PACKAGING

160g/tray, 36bags/ctn



Yellowfin Tuna Steak

SPECIFICATIONS

skinless, boneless, dark meat removed

WEIGHT/SIZE

110-140, 140-200, 200gm up

PACKAGING

IQF, Bulk, 10kg/ctn



Yellowfin Tuna Belly

SPECIFICATIONS

skin-on, boneless, dark meat removed

WEIGHT/SIZE

100-400, 400gm up

PACKAGING

IQF, Bulk, 10kg/ctn



Yellowfin Tuna Collar

SPECIFICATIONS

—

WEIGHT/SIZE

150-300, 300-500, 500gm up

PACKAGING

IQF, Bulk, 10kg/ctn





TUNA

Yellowfin Tuna Sushinetta (Sushi Slices)

SPECIFICATIONS

skinless, boneless, dark meat removed

WEIGHT/SIZE

—

PACKAGING

—



Bluefin Tuna Toro

SPECIFICATIONS

—

WEIGHT/SIZE

—

PACKAGING

—



Skipjack Whole Round

SPECIFICATIONS

—

WEIGHT/SIZE

1-1.8, 1.8-3.4kg, 5kg up

PACKAGING

1-1.8, 1.8-3.4kg, 5kg up



Swordfish Loin

SPECIFICATIONS

skinless, boneless

WEIGHT/SIZE

2kg up

PACKAGING

IQF, IVP, 25kg/ctn



Swordfish Steak

SPECIFICATIONS

skinless, boneless

WEIGHT/SIZE

4, 6, 8, 10, 12oz

PACKAGING

IQF, IVP, 10kg/ctn



Swordfish Saku

SPECIFICATIONS

skinless, boneless, bloodline removed

WEIGHT/SIZE

200-300, 300-500, 500gm up

PACKAGING

IQF, IVP, 10kg/ctn





FISH

Mahi Mahi Fillet

SPECIFICATIONS

Skin-on, boneless

WEIGHT/SIZE

1-3, 3-5, 5-7lbs

PACKAGING

IQF, IVP, 25kg/ctn



Mahi Mahi Loin Portion

SPECIFICATIONS

Skin-on / Skinless, boneless

WEIGHT/SIZE

120-200gm

PACKAGING

IQF, IVP, 10kg/ctn



Mahi Mahi Steak

SPECIFICATIONS

Skin-on / Skinless, boneless

WEIGHT/SIZE

100-140, 140-200g

PACKAGING

IQF, IVP, 10kg/ctn



Oilfish HG

SPECIFICATIONS

Headless, gutted

WEIGHT/SIZE

Oilfish HG

PACKAGING

Bagged



Oilfish Fillet

SPECIFICATIONS

Skin-on, boneless

WEIGHT/SIZE

2-4, 4-6, 6kg up

PACKAGING

IQF, IWP, 35kg/ctn



Oilfish Steak

SPECIFICATIONS

Skin-on / Skinless, boneless

WEIGHT/SIZE

100-120, 120-140, 140g up

PACKAGING

IQF, IVP, 10kg/ctn



Marlin HG

SPECIFICATIONS

Headless, gutted

WEIGHT/SIZE

30kg up

PACKAGING

Bagged



Marlin Loin

SPECIFICATIONS

skinless, boneless

WEIGHT/SIZE

2kg up

PACKAGING

IQF, IWP, 25kg/ctn



Marlin Steak

SPECIFICATIONS

Skin-on / Skinless, boneless

WEIGHT/SIZE

100-120, 120-140, 140g up

PACKAGING

IQF, IVP, 10kg/ctn



Patagonian Toothfish HG

SPECIFICATIONS

Headless, gutted

WEIGHT/SIZE

2-4, 4-6, 6-8, 8-10, 10-15, 15kg up

PACKAGING

Bagged



Patagonian Toothfish Fillet

SPECIFICATIONS

Skin on, boneless

WEIGHT/SIZE

1kg up

PACKAGING

IQF, IVP, 25kg/ctn



Patagonian Toothfish Portion

SPECIFICATIONS

Skin-on / Skinless, boneless

WEIGHT/SIZE

20-40, 40-60g 20-40, 40-60g

PACKAGING

IQF, IVP, 10kg/ctn



Patagonian Toothfish Steak

SPECIFICATIONS

Skin-on / Skinless, boneless

WEIGHT/SIZE

100-120, 120-140, 140g up

PACKAGING

IQF, IVP, 10kg/ctn



Moonfish HG

SPECIFICATIONS

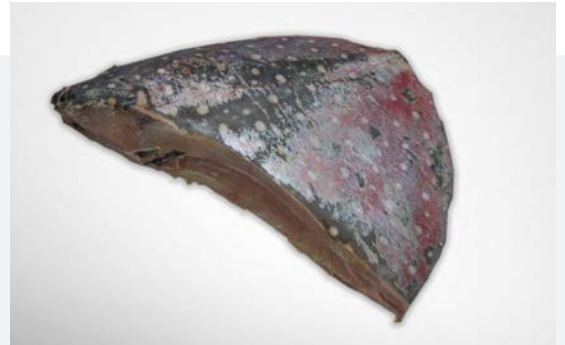
Headless, gutted

WEIGHT/SIZE

8kg up

PACKAGING

Bagged



Moonfish Loin

SPECIFICATIONS

Skin-on / Skinless, boneless

WEIGHT/SIZE

1.5kg up

PACKAGING

IQF, IVP, 25kg/ctn



Kingfish HG

SPECIFICATIONS

—

WEIGHT/SIZE

3kg up

PACKAGING

Bagged



Kingfish Fillet

SPECIFICATIONS

Skin-on / Skinless, boneless

WEIGHT/SIZE

1kg up

PACKAGING

IQF, IVP, 25kg/ctn



Kingfish Loin

SPECIFICATIONS

Skin-on / Skinless, boneless

WEIGHT/SIZE

0.5kg

PACKAGING

IQF, IVP, 10kg/ctn



Kingfish Steak

SPECIFICATIONS

Skin on, bone in

WEIGHT/SIZE

100-140, 140-200, 200g up

PACKAGING

IQF, IVP, 10kg/ctn



Black Cod Steak

SPECIFICATIONS

—

WEIGHT/SIZE

—

PACKAGING

—



Greenland Halibut Fillet

SPECIFICATIONS

—

WEIGHT/SIZE

—

PACKAGING

—



Atlantic Cod Fillet

SPECIFICATIONS

Skinless, boneless

WEIGHT/SIZE

400-900g

PACKAGING

IQF, IVP, 10kg/ctn



Barramundi Fillet

SPECIFICATIONS

Skin-on / Skinless, boneless

WEIGHT/SIZE

100-300, 300-500, 500g up

PACKAGING

IQF, IVP, 10kg/ctn





FISH

Grouper Fillet

SPECIFICATIONS

Skin-on / Skinless, boneless

WEIGHT/SIZE

100-300, 300-500, 500g up

PACKAGING

IQF, IVP, 10kg/ctn



Red Snapper Fillet

SPECIFICATIONS

Skin-on / Skinless, boneless

WEIGHT/SIZE

100-300, 300-500, 500g up

PACKAGING

IQF, IVP, 10kg/ctn



Yellow Croaker Whole

SPECIFICATIONS

—

WEIGHT/SIZE

—

PACKAGING

IQF, IVP, 20kg/ctn





FISH

Salmon

SPECIFICATIONS

Head on, gutted

WEIGHT/SIZE

2-3, 3-4, 4-5, 5-6, 6-7, 8-9kg up

PACKAGING

IQF, IWP, packed in random weight carton



Salmon Fillet

SPECIFICATIONS

Skin on, boneless

WEIGHT/SIZE

Trim A, B, C, D, E

PACKAGING

IQF, IVP



Soft Shell Crab

SPECIFICATIONS

Whole Round / Whole cleaned

WEIGHT/SIZE

70-100, 100-120, 120-150g

PACKAGING

—



Tobiko (Seasoned Flying Fish Roe)

SPECIFICATIONS

Seasoned : Orange, Red, Green, Yellow Color

WEIGHT/SIZE

500g/box

PACKAGING

500g/box



Masago (Seasoned Capelin Roe)

SPECIFICATIONS

Seasoned : Orange, Red, Green, Yellow Color

WEIGHT/SIZE

500g/box

PACKAGING

500g/box



Loligo Squid Whole

SPECIFICATIONS

—

WEIGHT/SIZE

—

PACKAGING

—



Lobster

SPECIFICATIONS

—

WEIGHT/SIZE

—

PACKAGING

—



Scallop

SPECIFICATIONS

—

WEIGHT/SIZE

—

PACKAGING

—



Octopus

SPECIFICATIONS

—

WEIGHT/SIZE

—

PACKAGING

—



Shrimps

SPECIFICATIONS

—

WEIGHT/SIZE

—

PACKAGING

—





We're always redefining the future of seafood.

Tastier. Richer. **Better for the world.**



Fish International Sourcing House Pte Ltd

320 Jalan Boon Lay

Singapore 619525

T +65 6316 8671

E info@fishsingapore.com

www.fishsingapore.com